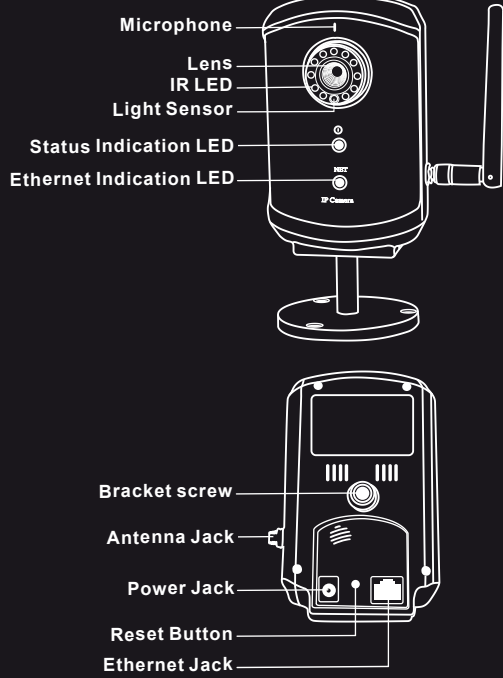


EN Quick Installation Guide

Day & Night IP Camera

Package and Product View



IP Cam



Installation CD



QIG



Account Card



Bracket



Anchors and Screws



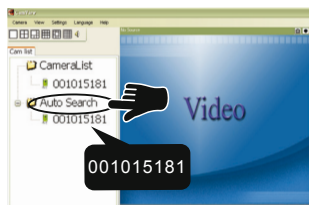
Ethernet Cable



Power Adapter

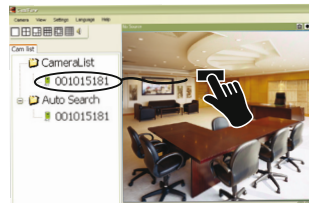
Seeing the video from anywhere

2 Once the CamView started, it will search all the IP Cam in your Local Area Network automatically and shows the Cam ID of each of the found IP Cam in the tree menu-"Auto Search" folder of the "Cam List" page.



Note: To save the found Cam ID on your PC, simply drag it from "Auto Search" folder to "CameraList". By doing so, you can easily play the video without memorizing the Cam ID.

3 To view the video, simply double-click on the Cam ID which you want to see or drag the Cam ID to one of the video play windows.



Note1: If the Cam you want to see is outside of your LAN and the Cam ID is not stored in the "CameraList", please right-click on the "CameraList", choose "New Camera" and enter the Cam ID and password.
Note2: For further operation, please refer to the full-version user manual of CamView.

4 Step Software for iPhone/iPad and Android mbiles

Please search the software name "mcamview" on the App Store for iPhone/iPad or on Android Market for Android mobiles

5 Step Wireless Setting of IP Cam

1 Please make sure the Ethernet cable is connected to the IP Cam.

2 Start the CamView. In the "Auto Search" folder, right-click on the Cam ID of the IP Cam that you want to configure. Click the "Web Configure ..." to open the browser.



3 Key in the admin account and password, respectively, to enter the web page of IP Cam.



Note
Default admin account is "admin" and the password is empty.

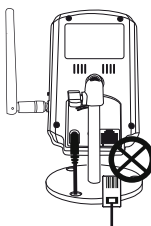
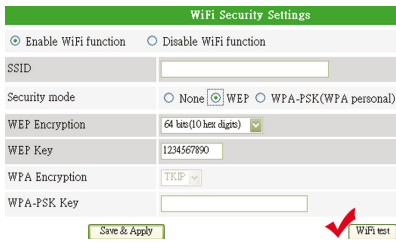
4 Click "WiFi Security" in the menu items to see the current settings of the WiFi.

5 Click the "WiFi Scan" button, all the available wireless AP will be listed. Click the AP you want to use, then key in the encryption key of the wireless AP.

6 Click "Save & Apply" to save the configuration.

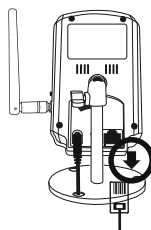


7 You can check the settings to see if they are correct, go to "WiFi security" page and click the "WiFi test" button in bottom right corner. Wait for about 15 seconds, the result will be displayed. If it's failed, please double check the settings you have entered.



Note
DO NOT plug off the Ethernet cable during the WiFi testing!

8 Now you are ready to activate the wireless connection by plugging off the Ethernet cable from the IP Cam.



Note
If the Ethernet cable is not plugged off from the IP Cam, the wireless function will not be activated even if you have enabled it.

6 Step Night mode control

There are three ways to control the night mode(IR LEDs)(On the web page of the IP Cam) :

- 1 Automatic day and night mode switch : the IP cam automatically turns on/off the IR LEDs according to the status of the built-in light sensor.
- 2 Scheduled time of night mode : the IP Cam can also be scheduled to turn on/off the IR LEDs.
- 3 Manual night mode control : the IP Cam can be manually forced to night mode(IR LEDs on) or day mode(IR LEDs off).

Warning

This device complies with part 15 of FCC Rules. Operation is Subject to the following two conditions: (1) this device may not cause harmful interference, and (2) this device must accept any interference

FCC Compliance Statement:

This equipment has been tested and found to comply with limits for a Class B digital device, pursuant to Part 15 of the FCC rules. These limits are designed to provide reasonable protection against harmful interference in residential installations. This equipment generates, uses, and can radiate radio frequency energy, and if not installed and used in accordance with the instructions, may cause harmful interference to radio communications.

However, there is no guarantee that interference will not occur in a particular installation. If this equipment does cause interference to radio or television equipment reception, which can be determined by turning the equipment off and on, the user is encouraged to try to correct the interference by one or more of the following measures:

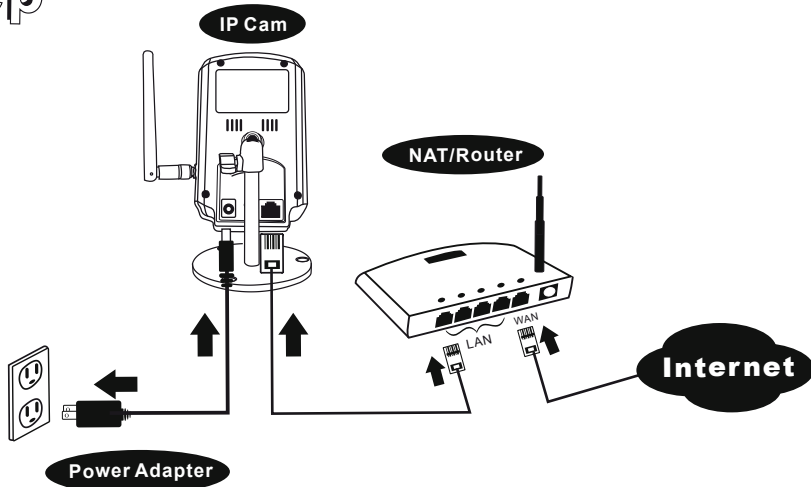
-Reorient or relocate the receiving antenna -Move the equipment away from the receiver-Plug the equipment into an outlet on a circuit different from that to which the receiver is connected.

-Consult the dealer or an experienced radio/television technician for additional suggestions. You are cautioned that any change or modifications to the equipment not expressly approved by the party responsible for compliance could void Your authority to operate such equipment.

This device complies with Part 15 of the FCC Rules. Operation is subjected to the following two conditions

- 1) this device may not cause harmful interference and
- 2) this device must accept any interference received, including interference that may cause undesired operation.

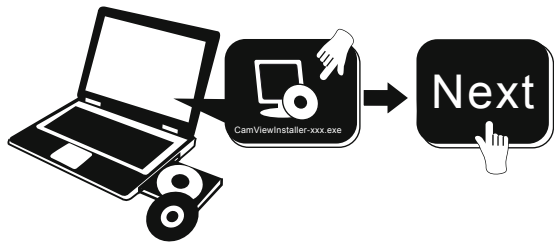
1 Step IP Cam Installation



- 1 Make sure you correctly plug in the power adapter and the Ethernet cable. IP Cam will get the IP address from the NAT/ Router automatically. The diagram above shows you how to connect the devices correctly.
- 2 Check the status indication LED of IP Cam to see if IP Cam is correctly connected. Constant red light means that IP Cam is working fine. Then, you can move forward to install the CamView (video management software). Otherwise, go back to 1 and check it again carefully. If the status indication LED is still blinking, contact your retailer then.

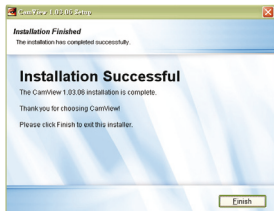
2 Step CamView Software Installation

- 1 Before installing CamView on your PC or laptop, please make sure you have correctly installed the IP Cam. It's highly recommended to close other Windows applications to prevent the installation from any possible confliction.
- 2 Insert the installation CD into your CD-ROM drive and find the CamViewInstaller-xxx.exe. Double click on it and press "Next" button till the end of the installation.



Note: xxx of CamViewInstaller-xxx.exe is the version number.

3 The right page "Installation Successful" should be displayed if everything is correct. If not, re-install it again. Contact your retailer if it is not working.



3 Step CamView Software Usage

- 1 Start the CamView application from either Start->Programs->CamView->CamView or the shortcut on the desktop of the Microsoft windows.